

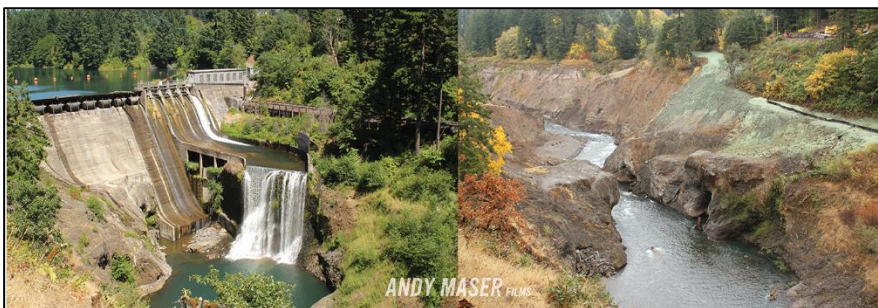
Trip 1: White Salmon River Dam Removal and Yakama Nation Tribal Fishery on the Klickitat River

Friday, August 21, 2015

Field Trip Location: Condit Dam removal site on the White Salmon River and Yakama Nation tribal fishery site on the Klickitat River in south-central Washington State near the Columbia River.

Field Trip Description: Travel to Klickitat River to observe tribal dip net fishery and meet with tribal elders and fishers. Tribal elders will provide history of fishery and cultural importance of the area. Tribal biologists will provide overview of Klickitat Basin fisheries and habitat restoration activities. Tour the new state-of-the-art Lyle Falls Fishway and Monitoring Facility and watch fish work-up.

Travel to the White Salmon Basin and tour the former Condit Dam and reservoir site. Condit Dam is the 2nd largest dam removal project in the nation (2011/12). Tribal elders and biologists will describe the tribal history on the landscape and fisheries management actions that led to the dam decommissioning and removal. Tour the restoration efforts underway at the former reservoir site. Conclude with an overview of the Underwood In-Lieu site impacted with sediments delivered from the dam removal and restoration activities underway.



The Condit Dam site – before and after removal

Approximate Field Trip Schedule:

- 9:00 am: Prompt departure from the Doubletree Hotel to Lyle Falls Fishway Facility.
- 10:30 am: Arrive at Lyle Falls Fishway Facility in Lyle, Washington. RESTROOMS located here.
- 12 pm: Depart Lyle Fishway Facility for former Condit Dam site.
- 12:30 pm: Arrive at former Condit Dam site.
- 1:15 pm: Travel to former Condit Dam reservoir site.
- 2:00 pm: Travel to former Yakama Nation Tribal In-Lieu site.
- 2:30 pm: Depart Yakama Nation Tribal In-Lieu site for Portland.
- 3:30 pm: Arrive back at the Convention Center to leave time for folks to walk around Portland.

Transportation: There will be 1 bus with an approximate 40 person capacity.

Trip Leaders: The tour will be led by Bill Sharp, Yakama Nation Fisheries Program. Handouts will be provided.

Additional Information: Attendees should wear comfortable shoes and provide their own water and snacks. A box lunch will be provided. Attendees should be prepared for warm weather.

For More Information on the Lyle Falls Fishway ([website](#)) and the Condit Dam Removal ([website](#)).

Cost: \$50/person includes transportation, box lunch, and maps and fact sheets. **Registration and cancellation deadline is July 24, 2015** as a courtesy to the Yakama Nation. Refunds will incur a \$10 service charge.

Contact: Rosemary Furfey (rosemary.furfey@noaa.gov, 503-231-2149)